

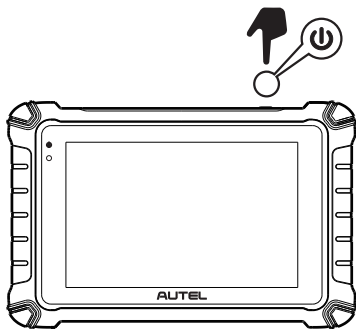
*Thank you for purchasing this Autel tool. Our tools are manufactured to a high standard and — when used according to these instructions and properly maintained — will provide years of trouble-free performance.*

### Getting Started



**IMPORTANT:** Before operating or maintaining this unit, please read these instructions carefully, paying extra attention to the safety warnings and precautions. Failure to use this product properly may cause damage and/or personal injury and will void the product warranty.

1



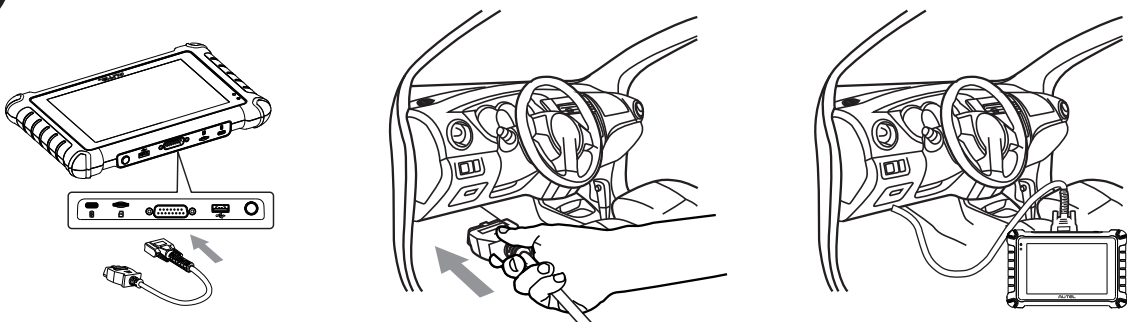
- Press and hold the **Power/Lock** button to turn on the tablet.
- Connect the female adapter of the main cable to the tablet and tighten the captive screws.

2



- Scan the QR code above to visit our website at [pro.autel.com](http://pro.autel.com).
- Create an Autel ID and register the product with its serial number and password.

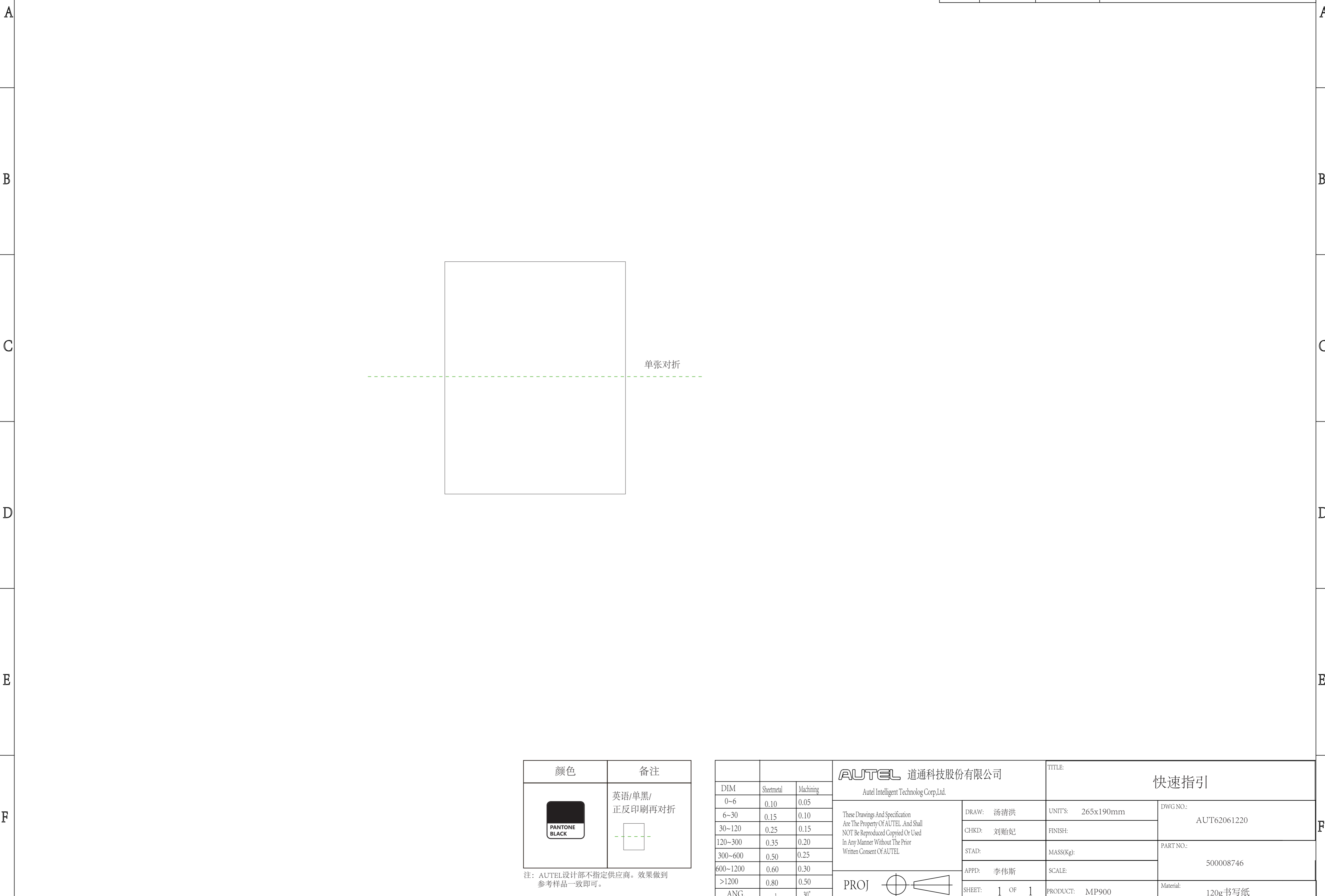
3



- Connect the 16-pin male adapter of the main cable to the vehicle's DLC, which is generally located under the vehicle dashboard.
- Your tablet is now ready for use.

RELEASE LEVEL: &PROJ\_RELEASE  
FILE NAME: MODEL NAME

7	8
POSITION	DATE



颜色	备注
	英语/单黑/ 正反印刷再对折 

注: AUTEL设计部不指定供应商。效果做到参考样品一致即可。

DIM	Sheetmetal	Machining
0~6	0.10	0.05
6~30	0.15	0.10
30~120	0.25	0.15
120~300	0.35	0.20
300~600	0.50	0.25
600~1200	0.60	0.30
>1200	0.80	0.50
ANG.	1~	30°

**AUTEL** 道通科技股份有限公司  
Autel Intelligent Technolog Corp.Ltd.

These Drawings And Specification Are The Property Of AUTEL .And Shall NOT Be Reproduced Copied Or Used In Any Manner Without The Prior Written Consent Of AUTEL.

PROJ

快速指引	
TITLE:	快速指引
DRAW: 汤清洪	UNIT'S: 265x190mm
CHKD: 刘贻妃	DWG NO.: AUT62061220
STAD:	FINISH:
APPD: 李伟斯	MASS(Kg):
SHEET: 1 OF 1	PART NO.: 500008746
PRODUCT: MP900	SCALE:
	Material: 120g书写纸