

1. Register Your Tool

Sign into <http://pro.auteltech.com>

(You must be a registered user to register a tool. If you are not a registered user, Click on **Create an Autel ID**. Follow that procedure to become a registered user and then register the tool.)

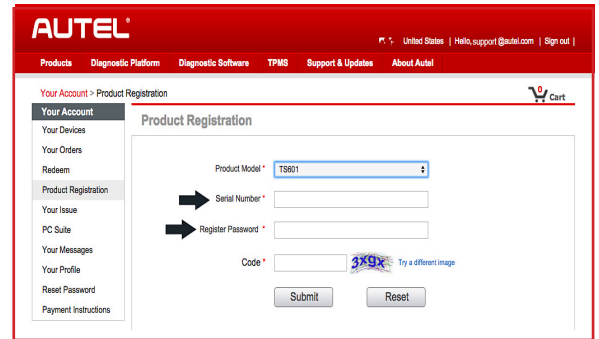
Click on Product Registration

Select the tool to register from the drop-down menu.
Next enter the tool's Serial Number and Password.

Locate the serial number and password by turning on your tool.

From the main menu select **Setup** and then **About**.

The *Serial Number* and *Password* are listed there.



2. Download & Install PC Suite

While you are still logged in to pro.auteltech.com,

Click on PC Suite. A chart with a listing of PC software will display.

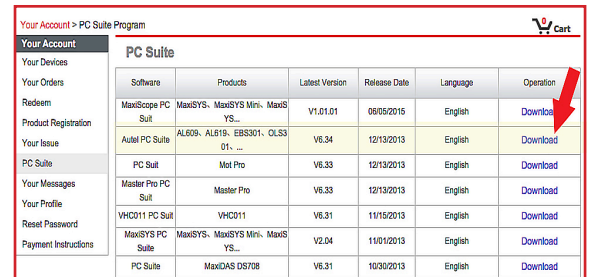
Locate **Autel PC Suite**, the second application listed and click on Download.



Once the program has downloaded, double-click on Setup.exe.

The Autel Update and Autel Printer shortcuts will display on your PC's desktop.

Take the SD out your tool (press in the card and it will eject). Place the SD card into a card reader attached to or integrated with your computer.



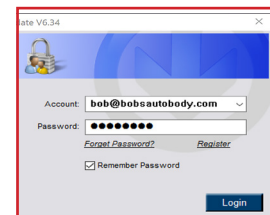
3. Launch Autel Update

On your PC, double-click on the **Autel Update** shortcut.
Enter your *Autel ID* and *password*.



Your ID is the password you used to create your Autel account. If you forgot your password, click **Forget Password?** and your password will be emailed to you.

- Allow for the Update program to load.
- Click on the **Updates** tab
- A Listing of the software updates will display.



4. Install Files on SD Card

• To download files individually, click on the **Install** button of each desired vehicle manufacturer or Check the box next to desired vehicle and then Press the **Update Selected Items** button.

To best manage your downloads, make no more than four selections at a time.

• When you have completed updating the SD card, eject the card and put it in the tool. Your Tool is Ready.

